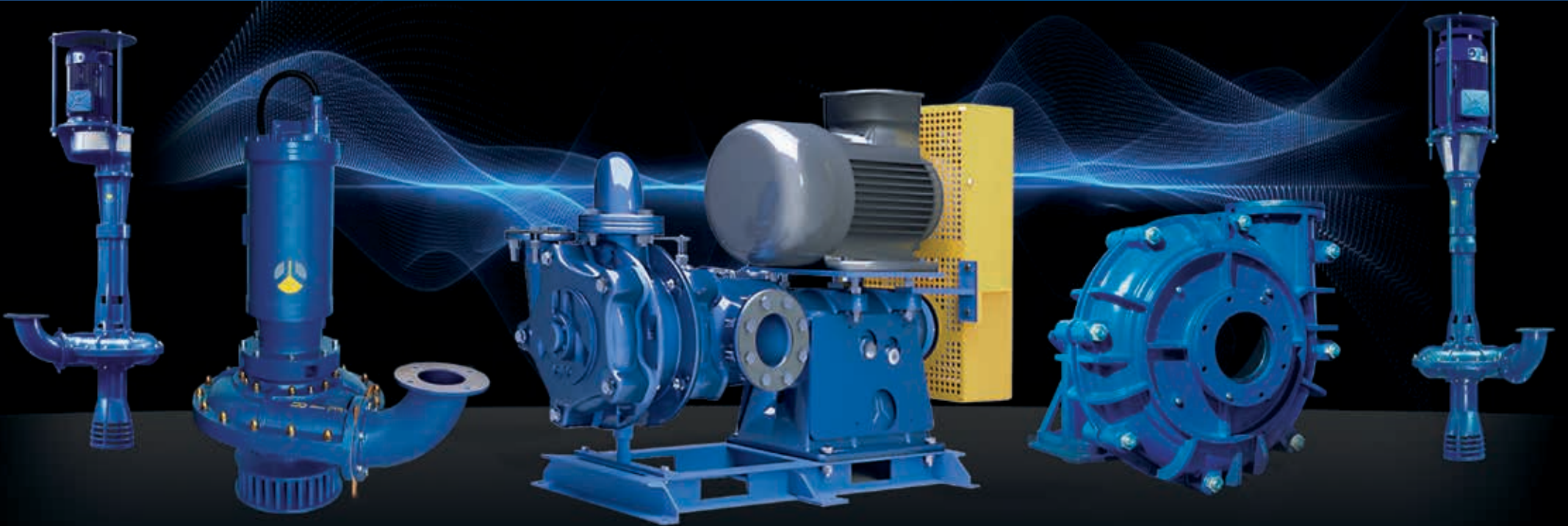




## COMPANY PROFILE



The background of the image is a collage of industrial machinery in grayscale. It includes close-ups of metal flanges with bolts, large circular openings, and various pipes and structural components. The central text is overlaid on a white rectangular area.

**50**

**ANNIVERSARY**

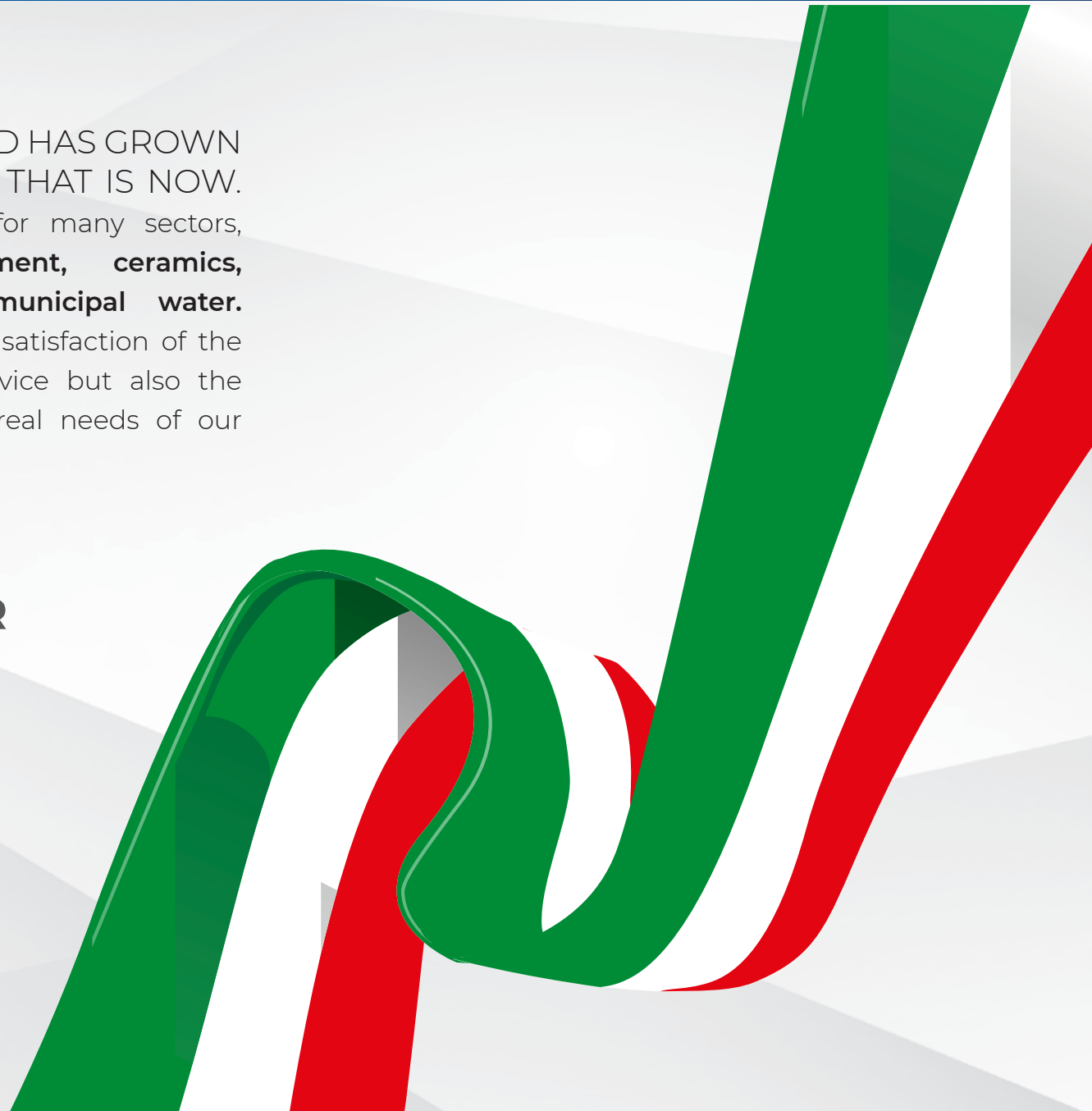
**1971 - 2021**

# A HISTORY OF TANGIBLE RESULTS



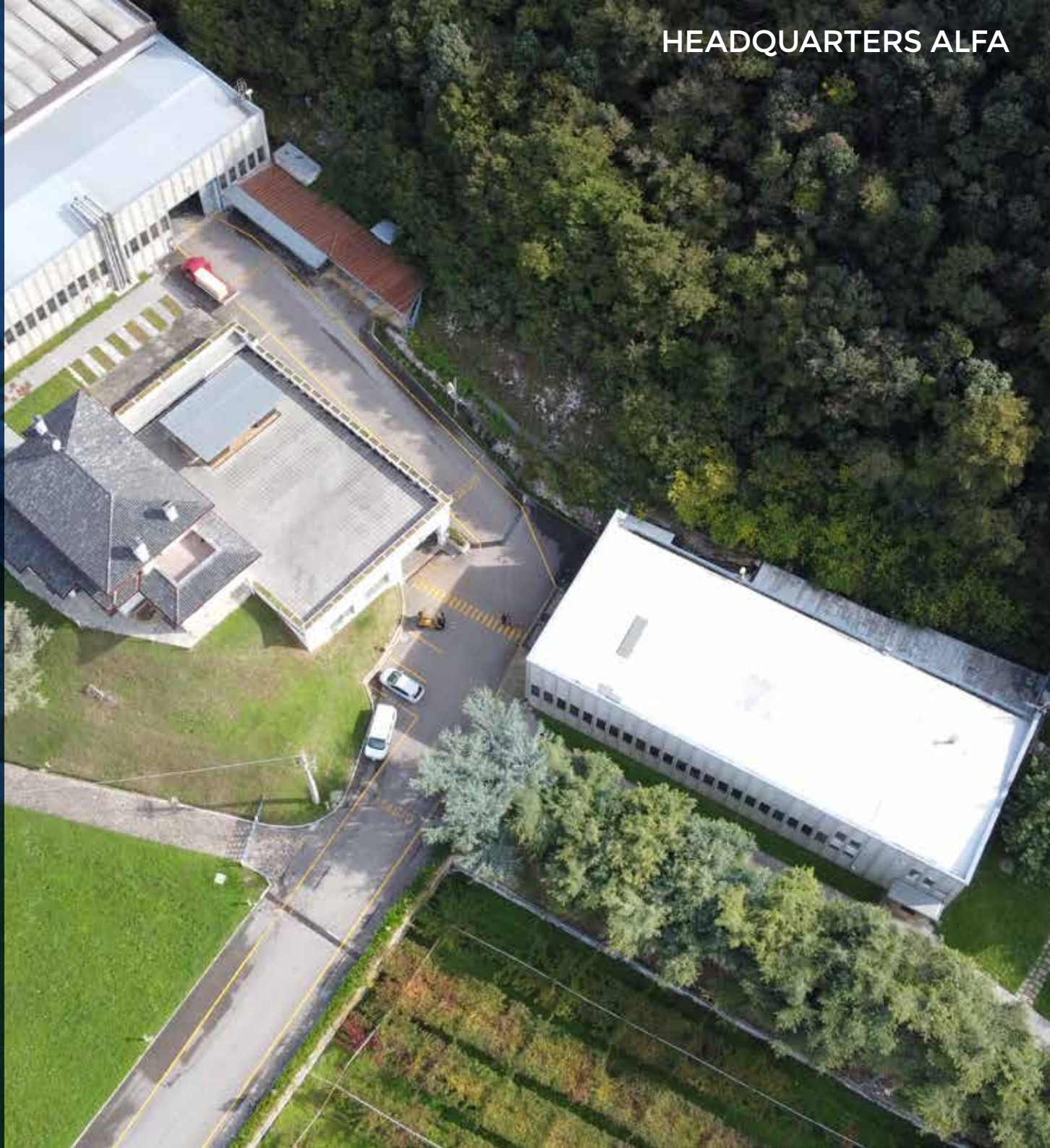
ALFA POMPE WAS BORN IN ITALY AND HAS GROWN UP TO THE INTERNATIONAL BRAND THAT IS NOW. Alfa Pompe projects and realizes pumps for many sectors, such as: **marble and granite, cement, ceramics, glass, coal, mining, aggregates and municipal water.** The objective of Alfa Pompe is the complete satisfaction of the customer, guaranteeing a fast after-sale service but also the pre-sale consulting. All this to identify the real needs of our customers.

**ITALIAN MANUFACTURER  
OF PUMPS  
100% ITALIAN COMPANY  
100% MADE IN ITALY**



**A FULL  
INTEGRATED  
PRODUCTION  
PROCESS  
IN OUR  
VERONA SITE**

**16.000 mq<sup>2</sup>  
DEDICATED  
TO YOU**



# A HISTORY OF SUCCESS



## **ARALDO CAPRILE FOUNDER** (1929 - 2018)

The son of Italian exiles in Albania, he returned to Italy after the end of the “second world war” where his father founded the first company that produces high performance pumps, EIR, based in Milan, which Araldo will carry on with a passion never tamed. In this era made of great experiences with his father, Araldo lived in the center of Milan, in Viale Magenta, a noble area of the city, and took his first entrepreneurial steps in the midst of the economic boom of the Italian “big apple”. After a formative period at Eir, he bought Alfa in 1971. A commuting life and then the decision to leave the big city to live in Dolcè. “A man without work is nothing.

Working is life”. With these words Araldo used to explain his professional choices and to confirm his passion for work he built his own house inside the perimeter of the factory It was so that he found his way to combine life and work without interruption of continuity. Araldo dies in 2018, leaving us his legacy as an example of entrepreneur, an example, more and more rare to find again among the “many” who call themselves such today.



## **MASSIMO BERTOLUCCI - MATTEO GOICH** **NEW OWNERS**

In 2003 they founded the company Matec S.r.l combining the experience of Massimo in the world of mechanics and the experience of Matteo in the administrative/commercial sector, in a few years they bring their brand to become a leader in the design and construction of complete plants for wastewater purification and filtration.

The exponential growth of the company in these years and an increasing customer portfolio, led the two to invest in the acquisition of Alfa company to guarantee to their customers, thanks to the already considerable structure behind them, a complete and entirely dedicated supply chain, able to satisfy new and old customers who rely on their hands.

Today Matec is all over the world, from Northern European countries to Australia, through our offices in the U.S.A. to the big mines of South America.

# AN EXPERT TEAM DEDICATED TO YOU

**50 %** **MATTEO GOICH**  
CEO

**50 %** **MASSIMO BERTOLUCCI**  
CTO



**BRUNELLA ANDREONI**  
CFO



**MARCO GASPARINI**  
FACTORY MANAGER



**STEFANO CHIESA**  
AREA MANAGER



**FABIO FORNARO**  
PRODUCTION MANAGER



**MARIA TERESA BONINI**  
SALES DEPARTMENT



**10 MECHANICAL  
ENGINEERS**



**10 EMPLOYEES DEDICATED  
TO R&D**

# REMEMBERING THE PAST TO BUILD THE FUTURE



Alfa Pompe is an historical company born in Verona in 1971, dedicated to the development and production of 100% Italian special rubber coated pumps for medium and big size companies that work in industrial and civil depuration sectors, developing an experience of 50 years.

And it is thanks to this mature experience that Matec Industries has decided to acquire Alfa Pumps, constituting a natural completion perimeter of the group's activities, strengthening itself further in a strategic segment for their core business, that is the one of high performance pumps for water and sludge. Accumulating mutual experiences and continuing

to invest in the evolution of Alfa products and in the market development, Matec Industries wants to bring the brand to worldwide competitiveness, making it, at the same time, an INTERNATIONAL PLAYER in a market in strong development, thanks also to a targeted restyling aimed at exalting the past and projecting into the future.



1971



2019



2021



**THE BEST ON EARTH**



**ALFA POMPE HEADQUARTERS**  
**-EUROPE & RUSSIA-**

---



**ALFA POMPE AFRICA**

---



**ALFA POMPE AMERICA**

---



**ALFA POMPE ASIA**

---



**ALFA POMPE PACIFIC**





TES  
CA

SOUTH  
AMERICA

BRAZIL

SWEDEN

UNITED  
KINGDOM

AUSTRIA

FRANCE

SPAIN

ITALY

TURKEY

RUSSIA

CHINA

INDIA

INDONESIA

AUSTRALIA

AFRICA

# VERONA VENETO



## WORLDWIDE NETWORK

400 PUMPS EACH YEAR  
150 TRUCKS EACH YEAR

# OUR STRENGTH



We design, manufacture and install pumps in any sector. The most important are **marble and granite, mining, aggregates, sand and gravel, concrete, ceramics plastic and glass.**

Through our systems we can guarantee the best results, allowing any site of work to achieve maximum efficiency and production, because Alfa Pompe products guarantee the best possible performances. We are able to provide to our customers the best quality machines, also thanks to the components of the best brands and the best assistance service. The main office of Alfa Pumps is located in Dolcè, Verona, Italy.

Our works hop and offices cover an area of 10.000 m<sup>2</sup>, here we design and produce all our machines to offer products 100% Made in Italy.

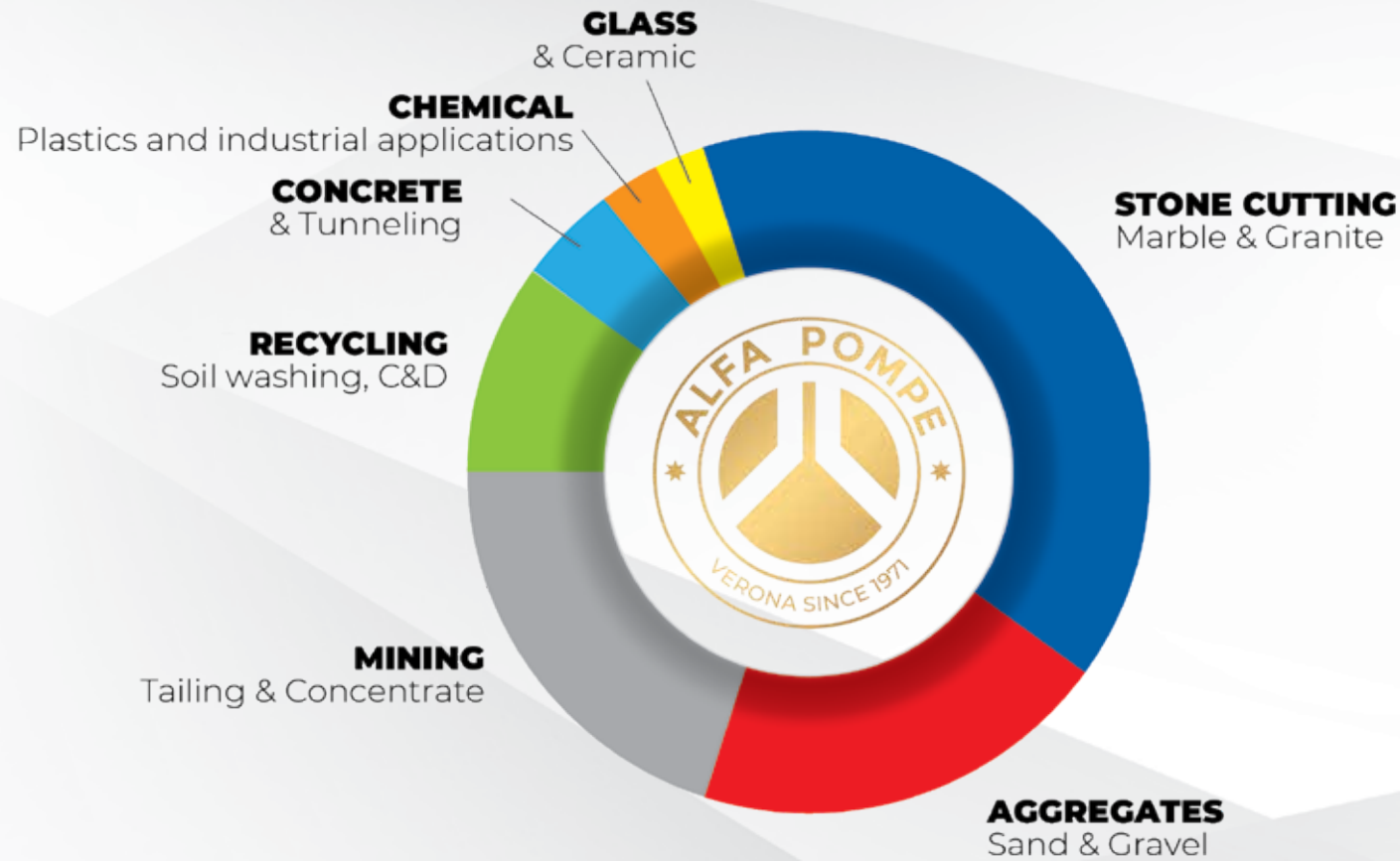
Thanks to a global dealer network and through our widely distributed warehouses, we can easily deliver parts and service quickly and on time to our customers.





**PERFORMANCE  
IN FLUID  
DYNAMICS**

# OUR SECTORS



Our turnover is generated for 40% in the marble and granite sector, but we are present in all reference sectors with solutions dedicated to every type of use. Our machines are designed with an experience in maintenance and installation of more than **3000 installations all over the world.**



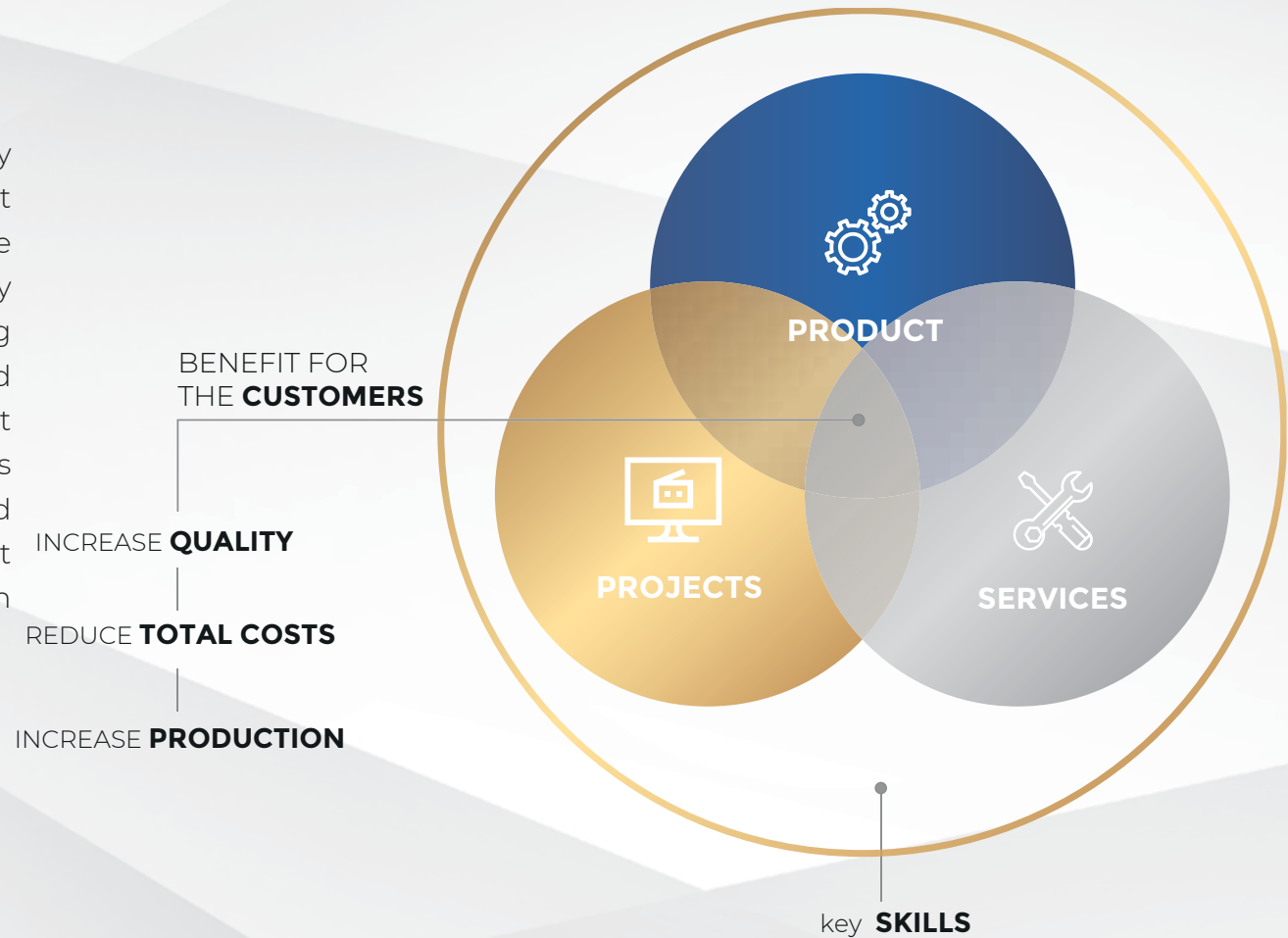
**OUR BUSINESS  
PLAN FOR THE  
THREE-YEAR  
PERIOD  
2021 - 2025**

# OUR MODEL OF BUSINESS



## A UNIQUE COMBINATION OF PROJECTS, PRODUCTS AND SERVICES

A dynamic business model and a completely internal production allows to have an excellent profit on all the production. The added value of our products guarantees a net marginality that gives the company a wide maneuvering space for investment in research and development and in increasing its market presence. Entering in the Matec Industries group guarantee a productive continuity and a cash-flow stability that allows Alfa to select its customers without compromising on quality and service.



# OUR GROWTH MODEL



To support the overall strategy and long-term financial goals, Alfa Pumps has decided to focus on seven strategic key areas: **Customers, Innovation and Digitization, People, Sustainability, Customer-Care, Production Segment Growth, Standardization**



ECONOMIC GROWTH | COMPLEXITY | SUSTAINABILITY | DIGITALIZATION

AGGREGATES | MINING | STEEL | RECYCLING | WATER TREATMENT

We achieve success through the enhancement of production sustainability

COMPETENCE | CAPACITY | COURTESY

BECOME THE #1 MANUFACTURER

PRODUCT LONGEVITY | PROCESS KNOWLEDGE | BEST TECHNOLOGIES

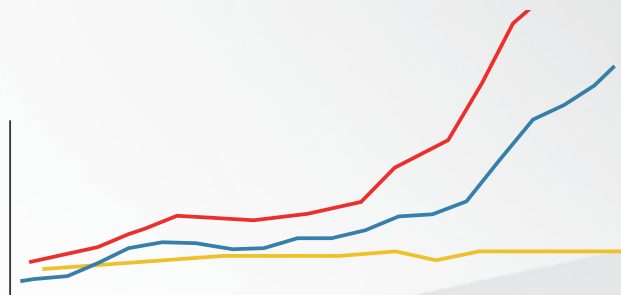
Growth>Market average | Roce>20% | EBITA margin of 10-13%

CUSTOMERS | INNOVATION AND DIGITALIZATION | PEOPLE | SUSTAINABILITY  
EXPAND SPARE PARTS SECTION | PRODUCT GROWTH | STANDARDIZATION

# OUR GOAL IN 2021



**1 MILLION €** CURRENT CUSTOMERS  
**2 MILLION €** CUSTOMERS PARTNER COMPANIES  
**1 MILLION €** NEW CUSTOMERS ITALY/ABROAD



The goal for 2021 will be to bring the company to a turnover of more than 3 million euros



**OUR  
PRODUCT  
LINE**





# VERTICAL PUMPS



## SPUTNIK

VERTICAL ANTI-ABRASIVE PUMP  
DIRECT COUPLED



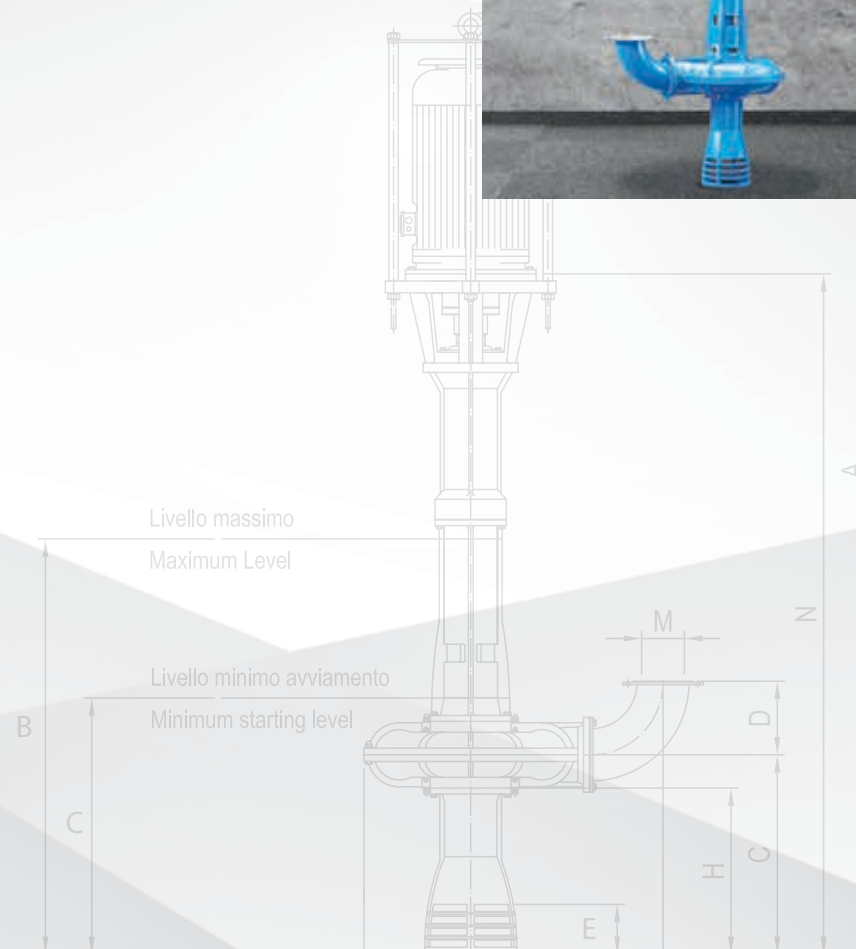
## TOWER

VERTICAL PUMP  
SPECIAL FOR DENSE SLUDGE



## GEYSER

VERTICAL ANTI-ABRASIVE PUMP  
WITH BELT COUPLING





# HORIZONTAL PUMPS



## DIABLO

SUPERALLOY CENTRIFUGAL PUMP  
ANTI-ABRASIVE SINGLE-BODY WITH  
HORIZONTAL AXIS

**HPT**  
HIGH PRESSURE  
TECHNOLOGY  
READY



## DELTA

SUPERALLOY CENTRIFUGAL PUMP  
ANTI-ABRASIVE DOUBLE BODY  
HORIZONTAL AXIS

**HPT**  
HIGH PRESSURE  
TECHNOLOGY  
16 BAR



## HURACAN

SUPERALLOY CENTRIFUGAL PUMP  
ANTI-ABRASIVE TRIPLE AXIS BODY  
HORIZONTAL

**HPT**  
HIGH PRESSURE  
TECHNOLOGY  
21 BAR



## LEVANTE

HORIZONTAL CENTRIFUGAL PUMP  
RUBBERIZED SINGLE-BODY

**HPT**  
HIGH PRESSURE  
TECHNOLOGY  
READY





# EVO

HORIZONTAL CENTRIFUGAL PUMP  
DOUBLE RUBBERIZED BODY

**HPT**  
HIGH PRESSURE  
TECHNOLOGY  
**16 BAR**



# NEPTUNE

CENTRIFUGAL PUMP  
MONOBLOCK



# ENOLA

HORIZONTAL CENTRIFUGAL PUMP



# ENOLA 75

HORIZONTAL CENTRIFUGAL PUMP



# OTHER PUMPS



## NAUTILUS

SUBMERSIBLE PUMP



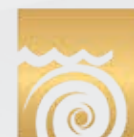
## HYDRA

CLEAR WATER PUMPING GROUP

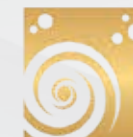


## WALF

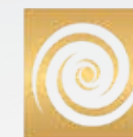
HYDROCYCLONES  
FRONTAL SUCTION PUMPS



SUBMERSIBLE PUMPS



CLEAR WATER PUMPS



FRONT SUCTION PUMPS

# SPARE PARTS



## IMPELLERS

IMPELLERS FOR PUMPS  
VERTICAL - HORIZONTAL



## VALVES

PNEUMATIC - MANUAL



## SHAFTS

SHAFTS FOR PUMPS  
VERTICAL - HORIZONTAL



## RUBBER BODIES AND SHELLS COATING INTERNAL

RUBBERIZED BODIES FOR PUMPS  
VERTICAL - HORIZONTAL

Cast iron body in two halves with moulded shells in anti-abrasive compound on metal core replaceable and adjustable from outside on our patented system.



## BENDS

CURVES AND RUBBER SLEEVES  
INTERCHANGEABLE



## PIPES & FLANGES



\*Spare parts for all brands of pumps



**[www.alfapompe.it](http://www.alfapompe.it)**

Via Trento 132/A  
37020 Dolcè Verona (VR) - Italy  
Tel: +39 045 7290055  
[info@alfapumps.it](mailto:info@alfapumps.it)  
P.IVA / VAT: IT00235680238

GOOGLE MAPS

